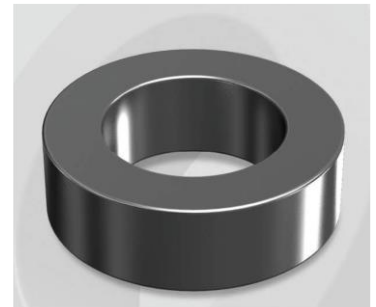


HP358019G

OD : 358

Electrical Characteristics

Material	Permeability (μ)	AL \pm 8% (nH/N ²)	DCB (% min) @ 200 Oe	Coreloss (mW/cm ² , max) @ 50kHz, 500G
HP	19	18	65.3	50



Core Dimensions

Dimensions		Uncoated		Coated		Color	Packaging
		(mm)	(inch)	(mm)	(inch)		
OD	(Max)	35.81	1.410	36.70	1.445	Black	Box Qty = 240 pcs
ID	(min)	22.35	0.880	21.50	0.846		
HT	(max)	10.46	0.412	11.28	0.444		

Physical Characteristics

Cross Section (A)	Path Length (l)	Window Area (W _a)	Volume (V)	Breakdown Voltage (Vac)
0.678 cm ²	8.98 cm	3.64 cm ²	6.088 cm ³	1,000
0.105 in ²	3.54 in	718,374 cmil	0.3715 in ³	

Winding Information

0% Winding length/turn (cm)		
3.776		
40% winding factor Surface Area (cm ²)		
56.09		
40% Wound Di.(mm)		
OD	ID	HT
42.15	14.09	17.71

Typical DC Bias Performance

